

T13N

R2E



Office of the Monroe County Surveyor
Trohn Enright-Randolph

Health Services Building
119 West 7th Street
Bloomington, IN 47404
Phone: (812) 349-2570

Dear User,

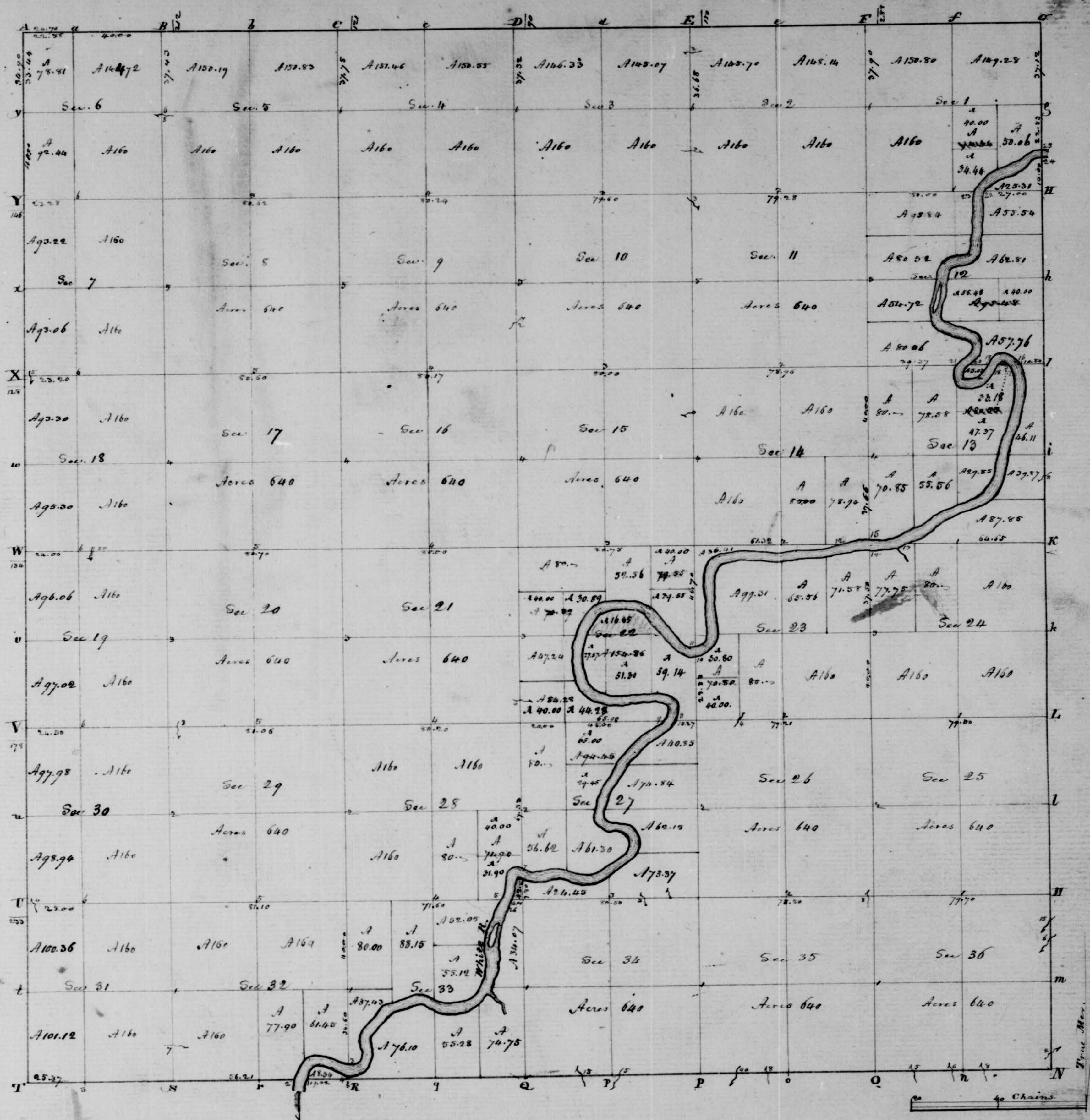
The following images were obtained in 2017 by the Office of the Monroe County Surveyor from the State Imaging and Microfilm Laboratory at the Indiana State Archives. The field notes and plats for Morgan County are stored on microfilm Reel 7534 at the Indiana State Archives. Each page provided by the State Imaging and Microfilm Laboratory is approximately 18MB. Our office combined the pages by Township & Range and reduced the resulting pdfs. This process may have caused some degradation in quality. We will provide unreduced images of specific pages if required. Please contact us at 812-349-2570 or at SurveyorsOffice@co.monroe.in.us to request a higher quality image of any specific page.

The pdfs are bookmarked with the original page numbers as assigned by the State Imaging and Microfilm Laboratory.

Be prepared to provide the county name, reel number, and the required page numbers when requesting full sized images.

If you would like a DVD of an entire county, please provide us with one DVD per county along with a self-addressed, stamped envelope.

Trohn Enright-Randolph
Monroe County Surveyor



Township N. VIII North, Range N. II East 2nd Mer. Surveyed by B. Bentley, 1820

Description of the Soil on the interior sectional lines.

Between Sections	Quality &c.	Between Sections	Quality &c.	Between Sections	Quality &c.
35.34	Sand, Silty 3 rd rate, Beech, Ash, Oak &c.	27.22	Sand, Silty 2 nd rate, Ash, Beech, Sugar, Elm &c.	29.32	Sand, Rolling 1 st rate, Ash, Beech, Sugar, Elm &c.
25.36	Same	22.27	Same - poor	29.31	Same
25.26	Sand, Rolling 1 st rate, Elm, Sugar	21.22	Same - Silty	19.31	Same
24.25	Same - 2 nd rate, Ash, Beech, Sugar &c.	15.22	Same - 1 st rate	20.29	Sand, poor 2 nd rate, timber, Same
23.24	Same	15.16	Sand, Silty 3 rd rate	19.21	Same, Rolling 1 st rate
18.24	Same	10.15	Same	17.21	Same
18.14	Same - poor	9.10	Same - 2 nd rate	18.19	Same
19.15	Same - Rolling	3.10	Same	18.18	Sand, Rolling 2 nd rate, Beech, Oak &c.
11.19	Sand, Rolling 1 st rate, Ash, Beech, Sugar, Elm, Sugar	2.11	Sand, poor 1 st rate, Ash, Beech, Sugar, Elm	18.17	Sand, poor 2 nd rate, Ash, Beech, Oak &c.
1.12	Same	2.2	Sand, Rolling 2 nd rate, Ash, Beech, Sugar &c.	7.18	Same - Rolling
1.2	Same	22.33	Same - Silty	7.8	Sand, Silty 2 nd rate
34.35	Sand, Silty 2 nd rate	28.33	Same - Rolling	5.8	Sand, poor 2 nd rate, timber, Same
26.35	Same - Rolling	28.29	Same - poor	6.7	Sand, Silty 2 nd rate
26.27	Same - poor	21.28	Same - Rolling	5.6	Same - Rolling 2 nd rate
23.26	Sand, poor 1 st rate, Ash, Beech, Sugar, Elm, Sugar	20.21	Same - poor		
22.23	Same	16.21	Same - Rolling		
14.23	Same	9.16	Same		
14.15	Same	4.7	Sand, Silty 2 nd rate		
11.14	Same	4.5	Same - poor		
11.11	Same	37.32	Sand, poor 1 st rate, Ash, Sugar, Beech, Elm		
33.34	Same 2 nd rate	30.31	Same - Rolling		
27.34	Same 1 st rate				

80.15	Intersected Boundary 81 lbs South of post	South	3.50 line bet. 5 & 8	N. 30 E	3.00 line bet. 6 & 6
	Land level 1 water. Ash. Beech. Sugar. Hickberry.	South	14.00 line bet. 8 & 8	N. 45 E	5.00 upper end of lake.
West	Corrected Between Sec 4 5 & 8	S. 52 W	4.50	N. 60 E	1.50
40.07	gr. Sec. corner Maple 18 N 5 E 31	N. 82 W	5.00	N. 70 E	2.50
	do 15 S 28 W 14	N. 60 W	4.50	S. 25 E	3.00
51.50	White River. Let post bottomwood 5 N 65 W 4	N. 50 W	5.00	S. 10 E	2.22 line bet. 5 & 6.
	do 4 S 34 E 6	N. 10 W	3.50	S. 10 E	3.50 line bet. 5 & 5.
56.55	Let post Walnut 4 S 22 W 22	North	2.45 line bet. 5 & 8	S. 15 W	5.50
	Small wood 3 N 52 E 8	North	8.50 line bet. 5 & 5.	S. 30 E	7.50
71.90	White River Maple 8 N 3 E 9	N. 55 W	7.00	S. 50 E	5.50
	do 5 S 25 E 10	N. 80 W	1.90 line bet. 5 & 6.	S. 80 E	8.50
75.40	Let post Oak. Birch 6 S 62 W 30	S. 75 W	5.00 line bet. 5 & 6.	N. 65 E	6.50
	Elm 10 N 12 W 9	S. 40 W	4.50 an island.	N. 25 E	7.50
80.15	Section corner	S. 85 W	5.50	N. 10 W	4.00
North	Between Sec 4 5 & 6	S. 47 W	5.00	N. 15 E	2.00
6.50	White River 3 chains West	South	2.42 line bet. 6 & 7.	N. 60 W	2.13 line bet. 5 & 8.
	Let post Bottomwood 10 S 60 E 50	S. 70 W	1.50 line bet. 7 & 7.	N. 20 E	2.50 line bet. 5 & 8.
	do 3 West 48	West	4.00 line end of lake.	N. 50 E	5.00
10.50	Let post Buckeye 2 N 70 W 19	N. 80 W	5.50	S. 85 E	4.50
	do 5 S 35 E 33	S. 80 W	5.00	S. 56 E	5.00
28.45	A. Hickory 12 in. diam.	S. 60 W	11.50	S. 78 E	7.00
30.00	gr. Sec. corner Beech 20 N 50 E 15	S. 50 W	7.50	N. 85 E	2.40 a. l. 2500 miles.
	Hickory 18 S 69 W 25	S. 35 W	4.50	N. 72 E	7.00 an island.
45.50	A. Spring	S. 20 W	5.00	N. 72 E	13.00
54.35	M. Ash 2 in. diam.	S. 15 E	13.50	N. 45 E	12.50 upper end of lake.
73.81	Intersected N. Boundary 236 lbs N. of post	S. 50 E	4.50	N. 20 E	7.00 an island.
	Beech 30 N 10 E 28	S. 50 W	2.50	North	15.50 upper end of do.
	Ash 7 S 39 W 40	S. 70 W	4.50	North	29.50
	Land & timber same	N. 60 E	11.00	N. 39 W	15.00
	Surveyed by B. Bentley & S.	N. 15 E	5.50	N. 48 W	7.74
		N. 13 W	16.50	N. 50 W	1.50
		N. 25 E	3.50	North	2.00
		N. 45 E	9.50	N. 17 E	3.88 N. boundary.
		N. 59 E	9.00		B. Bentley & S.
		N. 80 E	2.00		
		S. 70 E	2.50 an island.		
		S. 25 E	4.54		
		S. 10 E	8.00		
		S. 53 E	7.00		
		E	5.50		
		N. 45 E	8.00		
		N. 5 E	4.50		
		N. 20 W	7.00		
		N. 5 E	4.00 line bet. 6 & 7.		
5.14 W	3.50 line bet. 5 & 5	S. 51 E	7.50 line bet. 7 & 7.		
5.10 E	6.50	S. 80 E	4.50		
5.45 E	11.00	N. 60 E	11.00		
5.26 E	9.00	N. 15 E	5.50		
South	11.00	N. 13 W	16.50		
5.12 W	1.50	N. 25 E	3.50		
5.50 W	3.00	N. 45 E	9.50		
5.15 W	11.00	N. 59 E	9.00		
		N. 80 E	2.00		
		S. 70 E	2.50 an island.		
		S. 25 E	4.54		
		S. 10 E	8.00		
		S. 53 E	7.00		
		E	5.50		
		N. 45 E	8.00		
		N. 5 E	4.50		
		N. 20 W	7.00		
		N. 5 E	4.00 line bet. 6 & 7.		

Township N^o 13 north, Range N^o 2 East 2nd Mer.

Range Line - Var. 5° 15' E.		40.00	gr. Sec. corner	Sycamore 40 S 68 W 10
North Between Ranges 2 & 3 E. Townships 13 North				Beech 20 N 68 E 15
On the East side of Sec. 36		62.90	A. Sugar 15 in. diam.	
6.65 A. Beech 2 1/2 in. diam.		80.00	Let post corner of Sec. 12 N 13	
8.50 A. Branch 4 lbs S. E				Sugar 15 S 38 E 32
40.00 gr. Sec. corner Beech 36 S 28 W 27				do 6 S 20 W 4
do 21 S 42 E 5				Small Rolling Beech. Sugar. Walnut. Ang. Th. Spice
46.35 A. Beech 20 in. diam.		North	On the East side of Sec. 12	
61.00 A. Branch 6 lbs S. W		20.40	A. W. Oak 36 in. diam.	
67.54 A. Branch 15 lbs S. W		40.00	gr. Sec. corner	Buckeye 12 S 45 E 13
80.00 Let post corner of Sec. 25 S 36				Hickory 7 S 26 W 9
Beech 7 S 51 E 7		52.35	A. Hickory 21 in. diam.	
do 8 S 41 W 16		80.00	Let post corner of Sec. 18 12	
Gently Rolling Beech. Sugar. Ash. Poplar. Ang. Th. Spice				Hickory 20 S 53 W 43
North On the East side of Sec. 25				Burr Oak 20 S 66 E 35
17.00 A. W. Oak 2 1/2 in. diam.				Level Bottomland. Birch. Hickory. Walnut.
40.00 gr. Sec. corner Beech 27 S 6 E 22				Buckeye. Ang. Th. Spice. Birch. Ash.
do 18 S 27 E 12		North	On the East side of Sec. 1	
38.50 A. Beech 15 in. diam.		14.18	West side of White River. Let post Sycamore 30 S 66 E 12	
80.00 Let post corner of Sec. 24 S 25				do 12 S 36 W 4
Beech 18 S 24 W 22		17.34	Let post on the North side of White River	
do 24 S 15 E 28				Sycamore 6 S 33 E 8
Small Timber same. great Oak with Poplar				do 6 S 47 W 15
North On the East side of Sec. 24		28.30	A. Hickory 24 in. diam.	
23.05 Hiv. Blue 12 in. diam.		40.00	gr. Sec. corner	Hickory 18 S 7 W 20
40.00 gr. Sec. corner Oak. Oak 27 S 29 W 6				Buckeye 15 S 55 E 10
Sugar 8 S 30 E 22		77.12	Let post for corner of Sec. 13 S 14 E 23	
50.30 A. Hickory 20 in. diam.				East Sec. 1. 6. 3. 36 Elm 12 S 21 E 25
80.00 Let post corner of Sec. 13 S 24				Hickory 12 S 44 E 41
Beech 24 S 43 W 12				Land level
do 10 S 39 E 47				Surveyed by John McDonald 11 23
Rolling Birch. Beech. Sugar. Cherry. Walnut. Spice				
North On the East side of Sec. 13				
23.20 A. Sugar 15 in. diam.				
27.00 A. Branch 8 lbs S. W				

Survey of Island
in Sec. 6 & 7.
from post in line
of Sec. 6 & 7, on N.
side of Island.
S. 32 W 3.00
S. 67 W 5.00
S. 10 E 13.00
S. 70 E 8.00
S. 34 E 7.00
S. 14 W 12.00
S. 44 W 5.00 at 3.80 sec. line,
1.50 to post.
Land good.
Elm. Lym. Maple
Cottonwood &
Sycamore,
Oct. 17, 1848.
A. E. Van Ness D.S.

Township Lines		Var 75 15 16	
West	On a true line between 12 & 13 St. R 2 East	West	On the South Side of Sec. 33
	On the South Side of Sec. 36	19.60	A. Hickory 15 in. diam.
25.75	A. Beech 12 in. diam.	40.00	gr. Sec. corner Oak Ash 9 St 45 W 22
29.15	A. Branch 8 lks St. W		do 8 St 2 E 8
40.00	gr. Sec. corner Beech 12 St 25 E 21	47.90	A. Birch Oak 15 in. diam.
	do 15 St 36 W 15	80.00	Set post corner to Sec. 32 & 33
48.40	A. Branch 6 lks St. W		Blackberry 20 St 2 W 5
53.70	A. Beech 12 in. diam.		do 18 St 40 E 12
61.00	A. Branch 5 lks St. W	X	Local Bottom Rich timber Same
80.00	Set post corner to Sec. 35 & 36	West	On the South Side of Sec. 32
	Elm 20 St 4 E 20	19.02	Set post on E. bank of White River Elm 6 St 6 E 9
	Poplar 36 St 35 E 27		Maple 9 St 7 W 9
	Brookline Run & Beech Sugar Poplar 10 St 4 E 10	23.77	Set post on W. Bank of same Hickory 21 St 21 E 7
West	On the South Side of Sec. 35		Maple 18 St 31 W 23
11.25	A. Beech 15 in. diam.	40.00	gr. Sec. corner B. Walnut 27 St 25 W 54
40.00	gr. Sec. corner Sugar 7 St 52 E 8		Hickory 7 St 6 W 18
	Hickory 9 St 81 W 10	80.00	Set post to corner of Sec. 31 & 32
44.90	A. W. Oak 30 in. diam.		Beech 9 St 1 W 34
51.00	A. Branch 8 lks St. W	X	do 15 St 6 E 16
61.00	A. Beech 40 lks St. W		Local level overflows, Walnut, Blackberry, Sugar, Spice
80.00	Set post corner of Sec. 34 & 35	West	On the South Side of Sec. 31
	Buckeye 12 St 65 W 13	40.00	gr. Sec. corner Hickory 18 St 43 W 26
	do 9 St 3 E 23		Oak Oak 27 St 7 E 10
	Local Timber as above	65.37	To Township corner
West	On the South Side of Sec. 34		Surveyed by John McDonald, D.S.
19.80	A. Beech 15 in. diam.		
36.50	A. Branch 5 lks St. W		
40.00	gr. Sec. corner Beech 15 St 4 E 34		
	do 8 St 22 W 15		
56.20	A. Sycamore 30 in. diam.		
59.00	A. Branch 15 lks St. W		
80.00	Set post corner of Sec. 33 & 34		
	Buckeye 9 St 70 W 30		
	do 12 St 5 E 24		
First & Broken last level Bottom, Walnut, Blackberry, Sugar, Spice			

Subdivisions of Town 13 St. R 2 East		North Between Sec. 23 & 24	
Start	Between Sec. 35 & 36	35.40	Ar. Elm 18 in. diam.
29.36	A. Oak Gum 15 in. diam.	40.00	gr. Sec. corner Beech 20 St 5 E 38
40.00	gr. Sec. corner Beech 12 St 25 E 20		do 40 St 5 W 10
	do 18 St 10 W 16	54.90	A. Beech 18 in. diam.
55.75	A. Beech 18 in. diam.	77.50	White River 4.10 lks. West Sycamore 7 St 20 E 4
80.00	Set post corner of Sec. 25, 26, 35, 36		do 8 St 11 W 17
	Beech 12 St 80 E 21	80.00	Set post corner in River to Sec. 13, 14, 23, 24
	do 20 St 10 E 23		Local Rolling 1 st rate. Ash, Beech.
	Local Hill 2 nd rate. Beech, Oak, 10 St 10 th Birch.	East	Between Sec. 13 & 24 On Danclow
East	Between Sec. 25 & 36 On Danclow. 10 St 30 th 18 20	40.00	Temporary gr. Sec. post
40.00	Temporary gr. Sec. post	79.70	Intersected E. Boundary 1.10 lks South of post
79.70	Intersected E. Boundary 1.5 lks South of post		Rolling 2 nd rate. Ash, Beech, Sugar, 10 St 10 th Spice
	Local Timber Same	West	Corner to
West	Corner to	39.85	gr. Sec. corner Beech 6 St 5 E 10
39.85	gr. Sec. corner Elm 40 St 30 W 27		do 6 St 8 W 7
	Beech 10 St 83 E 12	64.65	White River set post Sycamore 10 St 4 W 21
79.70	Set corner of Section		Maple 30 St 6 E 16
Start	Between Sec. 25 & 26	79.70	Section corner
15.84	gr. Sec. corner Ash 10 St 37 W 4	Start	Between Sec. 13 & 14
	Blackberry 12 St 47 E 25	2.34	Set post Buckeye 11 St 12 W 20
55.20	A. Beech 12 in. diam.		do Sec. Mt 6 South 8
80.00	Set post corner to Sec. 23, 24, 25, 26	27.76	A. Oak Walnut 6 in. diam.
	Ash 10 St 4 E 12	40.00	gr. Sec. corner Sugar 15 St 54 W 4
	do 11 St 25 W 13		Buckeye 10 St 5 E 17
	Local Rolling 1 st rate. 10 St 10 th Spice	52.00	A. Sugar 30 in. diam.
East	Between Sec. 24 & 25 On Danclow	80.00	Set post corner to Sec. 11, 12, 13, 14
40.00	Temporary gr. Sec. post		Oak Ash 18 St 20 E 17
79.50	Intersected E. Boundary 1.10 lks South of post		Cherry 4 St 61 W 77
	Rolling 2 nd rate. Ash, Beech, Sugar, 10 St 10 th Spice		Local level 2 nd rate. Oak, B. Walnut, Sugar, 10 St 10 th Spice
West	Corner to	East	Between Sec. 12 & 13 On Danclow
39.75	gr. Sec. corner Sugar 15 St 39 E 16	39.37	W. River 7.10 lks. West Course S. W. current rapid
	do 10 St 39 W 19	40.00	Temporary gr. Sec. post
79.50	Section corner	54.75	White River 300 lks St. E
		65.50	Same 320 lks South current lively

79.40	Intersected E. Boundary 80 lks South of post	39.62	gr. Sec. corner	Buckeye 10 S 64 E 16
	Small Redding 2 nd rate, Ash, Sugar, Hackberry &c.			do 12 S 78 W 35
West	Corrected Between Sec ^s 12 & 13	79.25	Section corner	
10.80	White River Set post Ironwood 7 S 43 E 22		North Between Sec ^s 1 & 2	
	Hickory 4 S 85 E 13	21.60	Am. Ash 36 in. diam ^t	
15.00	Set post Willow 12 S 82 W 7	40.00	gr. Sec. corner	Ash 4 S 39 - 27
	do 6 S 80 E 10			do 12 S 22 W 20
20.50	White River Set post Willow 8 S 30 W 20	57.65	A. Beech 30 in. diam ^t	
	Sycamore 4 S 40 E 7	79.90	Intersected St. Boundary 2.85 lks West of post	
24.38	Set post Willow 6 S 72 W 21			Elm 40 S 44 W 21
	do 7 S 70 E 18			Os. Walnut 36 S 44 E 13
24.10	White River Set post Maple 3 S 27 E 4			Small level 1 st rate, Ash, Beech, Walnut, Sugar, Elm & Spice
39.70	gr. Sec. in River do 5 S 37 W 4		North Between Sec ^s 34 & 35	
39.78	Set post Willow 10 S 39 E 6	21.70	A. Beech 7 in. diam ^t	
	Maple 5 S 28 W 70	40.00	gr. Sec. corner	Ash 10 S 38 W 12
79.40	Section corner Aug. 31 st 1820			Beech 12 S 23 E 8
North	Between Sec ^s 11 & 12	58.32	A. Beech 24 in. diam ^t	
24.40	Am. Elm 36 in. diam ^t	80.00	Set post corner to Sec ^s 24, 27, 34, 35	
40.00	gr. Sec. corner Beech 20 S 40 W 7			Beech 24 S 46 E 26
	do 31 East 35			Sugar 36 S 43 W 21
52.80	Am. Ash 24 in. diam ^t			Small level 1 st rate, Beech, Ash, Sugar, Elm & Spice
80.00	Set post corner to Sec ^s 1, 2, 11, 12		East Between Sec ^s 26 & 35 On Random	
	Hackberry 18 S 47 E 23	40.00	Temporary gr. Sec. post	
	Beech 10 S 69 W 9	79.00	A. Sycamore 8 lks St. W	
	Small level 1 st rate, Hackberry, Sugar, Elm & Spice	78.50	Intersected Boundary 90 lks South of post	
East	Between Sec ^s 18 & 12 On Random			Nothing 2 nd rate timber same Sept. 1 st 1820
40.00	Temporary gr. Sec. post		West Corrected	
50.00	White River 2.10 lks course South	39.25	gr. Sec. corner	Beech 10 S 29 E 14
				do 6 S 85 W 3
79.25	Intersected E. Boundary 1.23 lks South of post	78.50	Section corner	
	Small & timber similar		North Between Sec ^s 26 & 27	
West	Corrected	19.74	A. Beech 8 in. diam ^t	
27.00	Set post at W. River Sycamore 24 S 34 W 14	40.00	gr. Sec. corner	Water Beech 10 S 80 E 22
	do 18 S 61 E 22			Beech 24 S 34 W 31
31.35	Set post at River Water Beech 6 S 31 W 17	68.90	A. Os. Walnut 6 in. diam ^t	
	Hackberry 7 S 47 E 10			

80.00	Set post corner to Sec ^s 22, 23, 26, 27		North Between Sec ^s 14 & 15	
	Hickory 12 S 47 E 6	22.94	Am. Ash 18 in. diam ^t	
	Os. Walnut 34 S 52 W 22	40.00	gr. Sec. corner	Beech 3 S 37 W 12
	Small level 2 nd rate, Ash, Walnut, Hackberry, Sugar & Spice			do 11 S 28 E 20
East	Between Sec ^s 23 & 26 On Random	59.50	A. Spring course West	
20.50	A. Spring Branch 4 lks St. E	76.65	A. Beech 18 in. diam ^t	
40.00	Temporary gr. Sec. post	80.00	Set post corner to Sec ^s 10, 11, 14, 15	
79.21	Intersected Boundary 70 lks. South of post			Beech 15 S 88 E 36
	Small level 2 nd rate, Ash, Sugar, Elm & Spice			do 12 S 80 W 20
West	Corrected			Small level 1 st rate, Ash, Beech, Sugar, Elm & Spice
34.60	gr. Sec. corner	Elm 10 S 41 W 19	East Between Sec ^s 11 & 14 On Random	
		do 6 S 50 E 1	40.00	Temporary gr. Sec. post
79.21	Section corner		78.96	Intersected Boundary 30 lks South of post
North	Between Sec ^s 22 & 23			Small 1 st rate level, Ash, Beech, Walnut, Elm & Spice
22.30	Am. Elm 10 in. diam ^t		West Corrected	
28.33	White River 2.50 lks N. set post Willow 7 S 40 W 10	37.48	gr. Sec. corner	Ash & Maple 10
				Beech 30 S 40 W 27
33.30	Set post from which	78.96	Section corner	
	Willow 4 S 80 W 18		North Between Sec ^s 10 & 11	
	do 5 East 3	23.21	A. Buckeye 10 in. diam ^t	
40.00	gr. Sec. corner		40.00	gr. Sec. corner
	Sycamore 10 S 44 W 20			Elm 36 S 57 W 20
	Elm 4 S 58 E 12			Sugar 8 S 59 E 36
65.84	Am. Ash 30 in. diam ^t	89.00	A. Beech 15 in. diam ^t	
80.00	Set post corner to Sec ^s 14, 15, 22, 23	75.00	A. Spring Branch 3 lks S. E	
	Hickory 10 S 5 E 30	80.00	Set post corner to Sec ^s 2, 3, 10, 11	
	Elm 40 S 34 W 14			Elm 7 S 41 E 12
	Small level 1 st rate, Ash, Walnut, Hackberry, Spice			Ash 48 S 80 W 36
East	Between Sec ^s 14 & 23 On Random			Small & timber same, Sept. 1 st 1820
7.00	White River 4 chains wide, course S. W		North Between Sec ^s 33 & 34	
79.37	Intersected Boundary 1.06 lks South of post	25.88	A. Buckeye 15 in. diam ^t	
	Small & timber same	40.00	gr. Sec. corner	Hickory 12 S 30 W 27
West	Corrected			Hackberry 18 S 1 W 67
18.05	Set post at River Sycamore 24 S 4 E 9	56.66	A. Buckeye 15 in. diam ^t	
	do 37 S 4 W 9	80.00	Set post corner to Sec ^s 27, 28, 33, 34	
34.68	gr. Sec. corner			Ash 10 S 51 E 25
	Hackberry 18 S 32 E 80			Hackberry 24 S 45 W 33
	do 12 S 48 W 13			Same 2 nd rate
79.37	Section corner			

East Between Sec^s 27 & 34 On Random
 40.00 Temporary gr. Sec. post
 55.60 A. Spring Branch 3 lks N
 65.00 A. Spring
 80.50 Intersected Boundary 2.43 lks South of post
 Land level 1st ante. Ash. Hackberry. Sugar. Angth Spice
 West Corrected
 40.25 gr. Sec. corner Ash 18 S 16 W 11
 Walnut 18 S 16 E 5
 80.50 Section corner
 North Between Sec^s 27 & 28
 7.80 N. River 3 chains S.W. Set post Sycamore 18 S 16 W 8
 do 24 S 39 W 15
 12.67 Set post at River Sycamore 10 S 16 W 43
 Hackberry 10 S 54 W 23
 27.93 Ash Elm 28 in. diam.
 40.00 gr. Sec. corner Ash 20 S 66 W 5
 Sugar 15 S 50 E 35
 55.60 A. Mulberry 11 in. diam.
 80.00 Set post corner to Sec^s 21, 22, 27, 28
 Beech 15 S 89 E 17
 do 18 S 35 W 26
 Billy D. ante. Ash. Beech. Sugar. Angth Spice
 East Between Sec^s 22 & 27 On Random
 40.00 Temporary gr. Sec. post
 65.00 White River 3 chains Course S. W
 80.50 Intersected Boundary 1.60 lks South of post
 Land level 1st ante. Ash. Beech. Sugar. Elm. Angth Spice
 West Corrected
 10.27 White River Set post Hackberry 26 S 15 E 27
 Hickory 18 S 4 E 90
 14.50 Set post at River Willow 3 S 9 W 13
 do 2 S 49 E 17
 40.25 gr. Sec. post Ash 30 S 39 W 28
 do 12 S 50 E 30
 80.50 Section corner

North Between Sec^s 21 & 22
 12.40 A. Spring Branch 4 lks East
 29.45 A. Cherry 15 in. diam.
 40.00 gr. Sec. corner Sugar 6 S 28 E 17
 do 12 S 17 W 25
 48.28 A. Sugar 12 in. diam.
 80.00 Set post corner to Sec^s 15, 16, 21, 22
 Beech 24 S 34 E 24
 Sugar 10 S 3 W 16
 Billy D. ante. Ash. Beech. Sugar. Angth Spice
 East Between Sec^s 15 & 22 On Random
 40.00 Temporary gr. Sec. post
 80.75 Intersected Boundary 1.58 lks South of post
 Land post Billy D. ante level 1st ante. Ash. Sugar.
 Hackberry. Angth Spice. Sept. 4th 1820
 West Corrected
 40.37 gr. Sec. corner Sugar 24 S 48 W 44
 Ash 26 S 39 E 34
 80.75 Section corner
 North Between Sec^s 15 & 16
 14.80 A. Sugar 8 in. diam.
 40.00 gr. Sec. corner Beech 6 S 57 E 10
 Dogwood 5 S 31 W 20
 55.60 A. W. Oak 24 in. diam.
 80.00 Set post corner to Sec^s 7, 10, 15, 16
 Dogwood - S 65 E 22
 Sugar 6 S 40 W 28
 Billy D. ante. Ash. Sugar. Poplar. Beech. Oak. Spice
 East Between Sec^s 10 & 15 On Random
 40.00 Temporary gr. Sec. post
 80.00 Intersected Boundary 1.73 lks South of post
 Land & timber same
 West Corrected
 40.00 gr. Section corner Sugar 6 S 79 W 22
 do 12 S 75 E 39
 80.00 Section corner

North Between Sec^s 7 & 10
 23.44 A. Beech 20 in. diam.
 23.94 A. Spring Branch 2 lks N. E
 40.00 gr. Sec. corner Sugar 4 S 82 W 11
 Ash 24 S 87 E 39
 63.20 A. W. Oak 48 in. diam.
 80.00 Set post corner to Sec^s 3, 4, 9, 10
 Beech 11 S 71 E 20
 Hickory 15 S 54 W 11
 Land Billy D. ante. Ash. Beech. Sugar. Hickory. Spice
 East Between Sec^s 3 & 10 On Random
 40.00 Temporary gr. Sec. post
 79.60 Intersected Boundary 200 lks South of post
 Land & timber same
 East Between Sec^s 2 & 11 On Random
 40.00 Temporary gr. Sec. post
 79.28 Intersected Boundary 15 lks South of post
 Land level 1st ante. Ash. Hackberry. Sugar. Angth Spice
 West Corrected
 39.64 gr. Sec. corner Buckeye 18 S 65 E 22
 do 7 S 33 W 21
 79.28 Section corner
 North Between Sec^s 2 & 3
 15.15 A. Sugar 26 in. diam.
 20.00 A. Spring Branch 3 lks East
 40.00 gr. Sec. corner Sugar 10 S 68 W 24
 Elm 11 S 50 E 16
 62.15 A. Beech 24 in. diam.
 66.60 A. Spring Branch 3 lks West
 76.68 Intersected St. Boundary 1.50 lks N. of post
 Sugar 10 S 41 E 12
 Beech 24 S 32 W 34
 Land Rolling D. ante. Ash. Beech.
 Sugar. Angth Spice
 West Corrected Between Sec^s 3 & 10
 39.80 gr. Sec. corner Ironwood 4 S 20 E 4
 Beech 20 S 30 W 27
 79.60 Section corner Sept. 8th 1820
 North Between Sec^s 32 & 33
 1.00 White River 2.50 lks West. Buckeye 6 S 33 W 15
 Hackberry 6 S 5 E 16
 5.40 Set post at River Willow 8 S 35 W 6
 Sycamore 7 S 30 E 5
 20.10 A. Blk. Walnut 30 in. diam.
 40.00 gr. Sec. corner Ash 6 S 55 E 23
 Beech 5 S 36 W 34
 67.90 A. Beech 18 in. diam.
 80.00 Set post corner to Sec^s 28, 29, 32, 33
 Hickory 15 S 70 E 24
 Beech 18 S 35 W 22
 Billy D. ante. Ash. Beech. Oak. Angth Spice
 East Between Sec^s 28 & 33 On Random
 40.00 Temporary gr. Sec. post
 71.60 White River, Course S. W. Current Moderate
 80.25 Intersected Boundary 1.60 lks South of post
 Rolling D. ante. Beech. Oak. Ash. Angth Spice
 West Corrected
 4.00 N. River Set post Willow 3 S 9 W 10
 Ash 24 S 33 E 28
 8.30 Set post at River Sycamore 14 S 53 W 9
 Cottonwood 7 S 16 E 50
 40.12 gr. Sec. corner Beech 11 S 21 E 28
 do 12 S 21 W 26
 80.25 Section corner
 North Between Sec^s 28 & 29
 23.50 A. Sugar 15 in. diam.
 40.00 gr. Sec. corner Sugar 6 S 82 E 18
 Dogwood 3 S 81 W 4
 58.50 A. Sugar 18 in. diam.

80.00 Set post corner to Sec: 20, 21, 28, 29
Beech 14 St 40 E 25
Michary 18 St 6 N 13
Sund level V. rater. Ash. Beech, Sugar, Oak, Spice
East Between Sec: 21 & 28 On Randome
40.00 Temporary of. Sec. post
80.20 Intersected Boundary 1.58 Mts South of post
Rolling V. rater. Ash. Beech, Sugar, Mug. Spice
West Corrected
40.10 of. Sec. corner Beech 6 St 80 E 12
do 18 St 29 N 20
80.20 Section corner
North Between Sec: 20 & 21
18.46 Spr. Hole 15 in. diam.
40.00 of. Sec. corner Os. Oak 15 St 75 N 21
Beech 15 St 7 E 30
61.50 H. Sugar 18 in. diam.
80.00 Set post corner to Sec: 16, 17, 20, 21
Beech 10 St 38 E 10
do 5 St 27 N 10
Sund V. rater. Ash. Beech, Poplar, Mug. Spice
East Between Sec: 16 & 21 On Randome
40.00 Temporary of. Sec. post
80.00 Intersected Boundary 1.75 Mts South of post
Sund & timber same
West Corrected
40.00 of. Sec. corner Beech 10 St 44 E 36
do 24 St 33 N 44
80.00 Section corner
North Between Sec: 16 & 17
18.00 H. Poplar 24 in. diam.
40.00 of. Sec. corner Beech 6 St 85 N 21
W. Oak 24 St 7 E 21
53.00 H. Beech 18 in. diam.

80.00 Set post corner to Sec: 8, 9, 16, 17
Beech 20 St 79 E 16
Sugar 6 St 66 N 17
Sund Rolling V. rater. Ash. Poplar, Beech, Mug. Spice
East Between Sec: 9 & 16 On Randome
40.00 Temporary of. Sec. post
80.17 Intersected Boundary 1.50 Mts South of post
Sund & timber same Sept. 6th 1820
West Corrected
40.08 of. Sec. corner Poplar 30 St 8 E 16
Beech 12 St 39 N 20
80.17 Section corner
North Between Sec: 8 & 9
18.20 H. Sugar 15 in. diam.
40.00 of. Sec. corner Beech 16 St 71 E 20
do 10 St 88 N 22
62.40 H. Beech 12 in. diam.
80.00 Set post corner to Sec: 4, 5, 8, 9
Beech 24 St 40 E 44
do 11 St 60 N 8
Sund V. rater. Ash. Beech, Sugar, Poplar, Mug. Spice
East Between Sec: 4 & 9 On Randome
40.00 Temporary of. Sec. post
80.24 Intersected Boundary 1.90 Mts South of post
First & same last a Mily V. rater. Ash. Beech, Oak
North Between Sec: 3 & 4
24.54 Spr. Hole 15 in. diam.
40.00 of. Sec. corner Beech 20 St 55 N 27
do 12 St 25 E 23
61.75 H. Michary 12 in. diam.
77.32 Intersected M. Boundary 70 Mts West of post
Beech 10 St 59 N 35
do 10 St 31 E 42
Sund Rolling V. rater. Ash. Beech, Poplar,
Michary - Mug. Spice

West Corrected Between Sec: 4 & 9
40.12 of. Sec. corner Sugar 6 St 46 E 6
do 7 St 15 N 26
80.24 Section corner
North Between Sec: 4 & 5
26.60 H. Michary 24 in. diam.
40.00 of. Sec. corner Beech 20 St 4 N 38
Michary 10 St 10 N 10
62.90 H. Sugar 8 in. diam.
77.75 Intersected M. Boundary 1.21 Mts N. of post
Water. Beech 4 St 35 E 33
do 5 St 26 N 16
Sund Mily V. rater. Michary, Ash. Beech, Mug. Spice
North Between Sec: 31 & 32
14.56 H. Spruce 7 Mts East
21.00 H. Sugar 18 in. diam.
40.00 of. Sec. corner Sugar 18 St 16 E 7
Beech 15 St 44 N 40
72.00 H. Beech 18 in. diam.
80.00 Set post corner of Sec: 29, 30, 31, 32
Sundwood 6 St 89 E 28
Beech 18 St 77 N 22
Sund V. rater. Ash. Sugar, Beech, Mug. Spice
West Between Sec: 30 & 31
25.16 H. Beech 24 in. diam.
40.00 of. Sec. corner Beech 10 St 1 N 33
do 20 St 5 E 20
57.80 H. Beech 10 in. diam.
63.50 H. Spring Branch 4 Mts N. W
65.00 Intersected M. Boundary 2.33 Mts N. of post
Beech 12 St 25 E 18
W. Oak 24 St 52 N 15
Rolling V. rater. Sund. Ash. Beech, Poplar,
Sugar, Mug. Spice

East Between Sec: 29 & 32 On Randome
40.00 Temporary of. Sec. post
51.10 Intersected Boundary 2.23 Mts South of post
Sund level V. rater. Ash. Beech, Poplar, Mug. Spice
West Corrected Sept. 7th 1820
40.55 of. Sec. corner Beech 10 St 40 E 46
do 4 St 80 N 21
81.10 Section corner
North Between Sec: 29 & 30
20.80 H. Beech 12 in. diam.
40.00 of. Sec. corner Beech 18 St 2 N 28
do 7 St 2 E 31
59.25 H. Michary 20 in. diam.
80.00 Set post corner to Sec: 19, 20, 29, 30
Water. Beech 6 St 79 N 14
Buckeye 4 St 72 E 14
Sund V. rater. Ash. Beech, Sugar, Walnut,
Hackberry, Buckeye, Mug. Spice
West Between Sec: 19 & 30
20.75 H. Beech 24 in. diam.
40.00 of. Sec. corner Beech 7 St 35 N 17
do 18 St 56 E 21
61.50 H. Beech 18 in. diam.
64.50 Intersected M. Boundary 1.78 Mts North of post
Beech 12 St 25-37
do 20 St 35 E 6
Sund level V. rater. Ash. Beech, Sugar, Walnut, V.
East Between Sec: 20 & 29 On Randome
7.00 H. Spring Branch 3 Mts S. W
40.00 Temporary of. Sec. post
81.06 Intersected Boundary 2.30 Mts South of post
Sund level V. rater. timber same
West Corrected
a Sugar 4 in cor from which a
40.53 of. Sec. corner Beech 15 St 83 E 25
do 3 St 2 N 7
81.06 Section corner.

80.00 Set post corner to Sec: 20, 21, 28, 29
Beech 14 St 70 E 25
Hickory 18 St 6 N 13
Land level 2nd rate, Ash, Beech, Sugar, Oak, Spice
East Between Sec: 21 & 28 On Brandon
40.00 Temporary of. Sec. post
80.20 Intersected Boundary 1.58 lbs South of post
Rolling 2nd rate Ash, Beech, Sugar, Hing. Spice
West Corrected
40.10 of. Sec. corner Beech 6 S 80 E 12
do 18 St 29 N 20
80.20 Section corner
North Between Sec: 20 & 21
18.46 A. H. 15 in. diam.
40.00 of. Sec. corner B. Oak 15 St 45 N 21
Beech 15 S 87 E 30
61.50 A. Sugar 18 in. diam.
80.00 Set post corner to Sec: 16, 17, 20, 21
Beech 10 S 38 E 10
do 5 St 27 N 70
Land 2nd rate, Ash, Beech, Poplar, Hing. Spice
East Between Sec: 16 & 21 On Brandon
40.00 Temporary of. Sec. post
80.00 Intersected Boundary 1.45 lbs South of post
Land & timber same
West Corrected
40.00 of. Sec. corner Beech 10 S 44 E 36
do 24 St 33 N 44
80.00 Section corner
North Between Sec: 16 & 17
18.00 A. Poplar 24 in. diam.
40.00 of. Sec. corner Beech 6 St 55 N 21
N. Oak 24 S 7 E 21
53.00 A. Beech 18 in. diam.

80.00 Set post corner to Sec: 8, 9, 16, 17
Beech 20 S 79 E 16
Sugar 6 St 66 N 77
Land Rolling 2nd rate, Ash, Poplar, Beech, Hing. Spice
East Between Sec: 9 & 16 On Brandon
40.00 Temporary of. Sec. post
80.17 Intersected Boundary 1.50 lbs South of post
Land & timber same Sept. 6th 1820
West Corrected
40.08 of. Sec. corner Poplar 30 S 8 E 16
Beech 12 S 39 N 20
80.17 Section corner
North Between Sec: 8 & 9
18.20 A. Sugar 15 in. diam.
40.00 of. Sec. corner Beech 6 St 41 E 20
do 10 St 58 N 22
62.40 A. Beech 12 in. diam.
80.00 Set post corner to Sec: 4, 5, 8, 9
Beech 24 S 40 E 44
do 11 St 60 N 8
Land 2nd rate, Ash, Beech, Sugar, Poplar, Hing. Spice
East Between Sec: 4 & 9 On Brandon
40.00 Temporary of. Sec. post
80.24 Intersected Boundary 1.90 lbs South of post
First & same last 2nd rate, Ash, Beech, Oak
North Between Sec: 3 & 4
24.54 A. Elm 15 in. diam.
40.00 of. Sec. corner Beech 20 St 53 N 27
do 12 S 25 E 23
61.75 A. Hickory 12 in. diam.
77.32 Intersected N. Boundary 90 lbs West of post
Beech 10 S 59 N 35
do 10 St 31 E 42
Land Rolling 2nd rate, Ash, Beech, Poplar,
Hickory - Hing. Spice

West Corrected Between Sec: 4 & 9
40.12 of. Sec. corner Sugar 6 S 46 E 6
do 7 St 15 N 26
80.24 Section corner
North Between Sec: 4 & 5
26.60 A. Hickory 24 in. diam.
40.00 of. Sec. corner Beech 20 St 4 N 38
Hickory 10 S 10 N 70
62.90 A. Sugar 8 in. diam.
77.75 Intersected N. Boundary 1.21 lbs W. of post
Water, Beech 4 St 35 E 33
do 5 S 26 N 16
Land 2nd rate, Hickory, Ash, Beech, Hing. Spice
North Between Sec: 31 & 32
14.56 A. Hickory 7 lbs East
21.00 A. Sugar 18 in. diam.
40.00 of. Sec. corner Sugar 18 St 16 E 17
Beech 15 S 44 N 40
72.00 A. Beech 18 in. diam.
80.00 Set post corner of Sec: 29, 30, 31, 32
do 6 St 89 E 28
Beech 18 St 77 N 22
Land 1st rate, Ash, Sugar, Beech, Hing. Spice
West Between Sec: 30 & 31
25.16 A. Beech 24 in. diam.
40.00 of. Sec. corner Beech 10 St 1 N 33
do 20 S 5 E 30
54.50 A. Beech 10 in. diam.
63.80 A. Spring Branch 4 lbs N. W
65.00 Intersected N. Boundary 2.33 lbs S. of post
Beech 12 S 25 E 18
N. Oak 26 St 52 N 15
Rolling 2nd rate land, Ash, Beech, Poplar,
Sugar, Hing. Spice

East Between Sec: 29 & 32 On Brandon
40.00 Temporary of. Sec. post
81.10 Intersected Boundary 2.23 lbs South of post
Land level 2nd rate, Ash, Beech, Poplar, Hing. Spice
West Corrected Sept. 7th 1820
40.55 of. Sec. corner Beech 10 S 60 E 46
do 4 S 80 N 21
81.10 Section corner
North Between Sec: 29 & 30
20.80 A. Beech 12 in. diam.
40.00 of. Sec. corner Beech 18 St 2 N 28
Ash 7 S 2 E 31
59.25 A. Hickory 20 in. diam.
80.00 Set post corner to Sec: 19, 20, 29, 30
Water, Beech 6 St 79 N 14
Buckeye 4 S 72 E 14
Land 1st rate, Ash, Beech, Sugar, Walnut,
Hickory, Buckeye, Hing. Spice
West Between Sec: 19 & 30
20.75 A. Beech 24 in. diam.
40.00 of. Sec. corner Beech 7 S 35 N 17
do 18 St 56 E 21
61.50 A. Beech 18 in. diam.
64.50 Intersected N. Boundary 1.78 lbs North of post
Beech 12 S 25 E 37
do 20 St 35 E 6
Land level 1st rate, Ash, Beech, Sugar, Walnut, 1st
East Between Sec: 20 & 29 On Brandon
7.00 A. Spring Branch 3 lbs S. W
40.00 Temporary of. Sec. post
81.06 Intersected Boundary 2.30 lbs South of post
Land level 2nd rate, timber same
West Corrected
40.53 of. Sec. corner Beech 15 St 83 E 25
do 3 S 72 N 7
81.06 Section corner.

Meanders in T. 4 N. R. 2 E. Continued from page 248.

Left bank Continued.		Right bank Contd.	
N. 35 th	5.12 In sec 32, Contd.	N. 42 nd	13.50
N. 9 th	8.33	N. 35 th	25.00
N. 10 th	2.98	N. 11 th	10.00
N. 31 st	6.42	N. 15 th	9.50
N. 30 th	1.57	N. 23 rd	10.50
N. 40 th	8.45	N. 18 th	11.50
N. 52 nd	7.68	N. 23 rd	4.50
N. 31 st	3.46	N. 26 th	5.90 line between sec 29 & 32
N. 7 th	3.41	N. 33 rd	14.50 In sec 32.
N. 47 th	10.52	N. 43 rd	10.50 a brook 800 yds. wide.
N. 30 th	2.71 To old boundary line, Surveyed June 4, 1807 by H. Harris, D.S.	N. 23 rd	11.00
Meanders of Right Bank of White River, from post on line between Ranges 1 & 2 E. thence up E. to		N. 40 th	6.00
N. 87 th	17.50 In sec 19, T. 4 N. R. 2 E.	N. 56 th	11.00
N. 65 th	15.50	N. 34 th	13.00
N. 50 th	14.50	N. 50 th	11.00
N. 39 th	30.50	N. 53 rd	4.75
N. 42 nd	7.08 line between sec 19 & 20	N. 59 th	10.25
N. 35 th	7.00 In sec 20, T. 4 N. R. 2 E.	East	6.50
N. 50 th	8.50	N. 69 th	6.50 line between sec 32 & 33
N. 58 th	15.50	N. 52 nd	23.50 In sec 33.
N. 64 th	5.08 line between 17 & 20.	N. 65 th	9.00
N. 77 th	14.50 In sec 17.	N. 55 th	3.50
N. 66 th	18.50	N. 70 th	12.00
N. 83 rd	11.00	N. 73 rd	6.00
N. 74 th	4.50	N. 29 th	8.00
N. 71 st	6.04 line between 16 & 17.	N. 7 th	18.50
N. 60 th	9.50 In sec 16	N. 87 th	4.50
N. 43 rd	6.76 line between 16 & 21.	N. 21 st	4.00
N. 33 rd	13.00 In sec 21.	N. 4 th	7.00
N. 1 st	18.50	N. 7 th	11.00
N. 12 th	6.25	N. 36 th	9.00
N. 8 th	20.00	N. 70 th	15.17 line between sec 33 & 34.
N. 53 rd	13.50	N. 44 th	15.00 In sec 34.
N. 62 nd	4.41 line between 20 & 21	N. 70 th	9.00
N. 58 th	7.50 In sec 20	N. 13 th	11.25
N. 52 nd	9.00	N. 1 st	5.16 line between 27 & 34.
N. 46 th	7.06 line between 20 & 29.	N. 5 th	8.50 In sec 27
		N. 30 th	28.50
		N. 5 th	16.50
		N. 15 th	6.50
		N. 25 th	13.00

(forward)

Meanders in T. 4 N. R. 2 E. Continued.

Right Bank Contd.		Survey of Island in sec 22, T. 4 N. R. 2 E. from post in line of sec. 22 & 23, on S. side of River, thence	
N. 29 th	13.00	S. 86 th	57.50 - to post on E. end of island
N. 24 th	185. line between sec 22 & 27	S. 86 th	8.00
N. 26 th	17.40 In sec 22.	N. 67 th	5.00
N. 30 th	7.50	N. 40 th	4.00 NW. end of island
N. 14 th	10.00	S. 13 th	6.00
N. 32 nd	10.50	S. 17 th	6.00
N. 70 th	8.50	S. 57 th	5.00
N. 79 th	9.75	N. 75 th	5.00
N. 34 th	15.00	N. 41 st	9.00
N. 68 th	4.40 line between 22 & 23.	N. 12 th	1.50 to post.
N. 44 th	17.50 In sec 23.	Land 1 st rate, no timber. This Island has been cultivated Oct. 12, 1843.	
N. 86 th	3.50 a Brook 380 yds. wide.	A. C. Van Ness D.S.	
N. 86 th	36.50		
N. 48 th	9.50		
N. 44 th	12.50		
N. 70 th	7.00		
N. 80 th	7.50 line between sec 23 & 24.		
N. 64 th	4.75 In sec 24.		
N. 29 th	6.50		
N. 3 rd	5.50		
N. 10 th	5.50 a brook 2000 yds. wide.		
N. 10 th	2.00		
N. 35 th	15.00		
N. 45 th	5.50		
N. 80 th	14.00		
N. 57 th	6.00		
N. 71 st	7.50		
N. 79 th	25.00		
N. 80 th	7.00		
N. 59 th	7.00		
N. 51 st	4.70 To post in E. boundary.		

Meanders in T. 13 N. R. 2 E. Continued from page 34.

Right bank. Cont.		S. 3 E	7.90
Q. 22 m	2.32 In Sec. 22. cont.	S. 8 m	6.50
Q. 53 m	5.00	S. 52 m	9.50
Q. 25 m	6.00	S. 59 m	4.00
Q. 5 m	13.50	S. 83 m	6.50
Q. 20 E	4.50	N. 85 m	3.74
Q. 47 E	8.00	N. 73 m	4.50
S. 61 E	5.50	N. 58 m	8.00
S. 82 E	14.50	S. 68 m	14.50
N. 85 E	9.00	S. 55 m	9.00
N. 45 E	5.50	S. 28 m	3.50
Q. 80 E	2.76	S. 40 m	6.50
Q. 42 E	3.00	S. 5 E	11.50
Q. 10 E	4.00	S. 62 m	7.44 To Sec. line.
Q. 18 m	4.44 to Sec. line.	N. 69 m	4.50 In Sec. 22.
Q. 45 m	3.50 In Sec. 27	N. 55 m	9.00
S. 59 m	9.50	S. 65 m	9.50
S. 45 m	18.50 Sept. 20, 1820.	S. 57 m	4.50
S. 25 m	8.00	S. 12 m	6.13 To S. Boundary.
S. 40 m	8.50	Meanders of Left Bank from S. Boundary up stream. In Sec. 32, T. 13 N. R. 2 E.	
S. 3 m	8.00		
S. 20 E	4.50		
S. 55 E	2.71		
S. 62 E	7.50		
S. 75 E	2.50		
S. 10 E	2.50		
S. 45 m	9.50 a Rapid.		
S. 55 m	5.00		
S. 47 m	6.00		
S. 76 m	6.50	N. 20 E	3.00
S. 85 m	3.50	N. 55 E	3.50
N. 80 m	2.50	N. 62 E	3.50
N. 67 m	9.50	Q. 80 E	5.50
N. 51	10.00	Q. 53 E	7.00
N. 55 m	3.97 to Sec. line.	Q. 75 E	2.76 To Sec. line.
N. 58 m	6.50 In Sec. 28.	Q. 75 E	6.00 In Sec. 33.
S. 25 m	6.00	N. 63 E	6.50
S. 35 m	5.00	N. 50 E	2.50
S. 10 m	2.50 To Sec. line.	N. 30 E	1.50
S. 30 m	12.29 In Sec. 33.	N. 10 E	4.50
S. 20 m	1.00 in Island	N. 23 E	4.00
S. 20 m	10.50	N. 32 E	8.50
S. 21 E	2.00 Lower end of Island	N. 5 E	7.00
		N. 40 E	3.00
		N. 55 E	3.50
		N. 85 E	8.00
		S. 75 E	8.50
		S. 61 E	6.00
		S. 82 E	6.50
		N. 78 E	8.00
		forward.	

Meanders in T. 13 N. R. 2 E. Continued

N. 48 E	10.50	S. 33 E	8.50
N. 25 E	5.00 a Creek 39 ft wide.	S. 50 E	4.00
N. 10 E	3.50	S. 30 E	3.00
N. 20 E	5.00	S. 60 E	6.00
N. 8 m	5.50	N. 82 E	4.07 To Sec. line.
N. 5 E	3.50	N. 82 E	8.50 In Sec. 23.
N. 15 m	9.50	N. 46 E	6.00
N. 28 E	10.50	N. 24 E	3.50
N. 20 E	3.50 To Sec. line.	N. 5 E	10.50
N. 45 E	10.00 In Sec. 28	N. 18 m	7.00
	78	N. 9 m	8.50
	3.50 to Sec. line.	N. 10 E	6.00
N. 71 E	3.00 In Sec. 27.	N. 40 E	7.50
S. 88 E	7.00	N. 78 E	3.00
S. 71 E	5.50	S. 76 E	10.00
S. 85 E	15.50	Coast	13.50
N. 75 E	6.00	Q. 83 E	5.50
N. 53 E	7.00	N. 83 E	27.00
N. 37 E	12.00	N. 75 E	6.37 to Sec. line.
N. 16 E	10.00 Sept. 24, 1820.	N. 75 E	17.00 In Sec. 24. a Stream 25 ft wide
N. 19 m	4.50	N. 78 E	21.00
N. 71 m	6.00	N. 65 E	1.00 To Sec. line.
N. 80 m	4.00	N. 65 E	3.50 In Sec. 13.
N. 30 m	4.00	N. 71 E	4.50
N. 20 E	3.50	N. 60 E	19.00 at 3.50 a Spring.
N. 40 E	12.50	N. 69 E	16.00
N. 27 E	8.00	N. 50 E	3.50
N. 30 E	23.50	N. 49 E	11.50
N. 29 E	3.85 To Sec. line.	N. 15 E	3.00
N. 29 E	8.50 In Sec. 22.	N. 10 E	6.00
N. 17 m	5.50	N. 8 m	8.50
N. 42 m	5.00	N. 20 E	3.50
N. 66 m	5.50	N. 33 E	6.00
S. 85 m	17.50	N. 20 E	10.50
N. 88 m	7.50	N. 10 E	9.00
N. 65 m	4.50	N. 20 E	2.50
N. 45 m	9.50	N. 0 m	6.50
N. 5 E	7.00	N. 32 m	2.50
N. 35 E	2.00	N. 52 m	1.00
N. 52 E	4.50	N. 35 m	1.80 To Sec. line.
N. 77 E	4.50	N. 35 m	4.00 In Sec. 12.
S. 82 E	7.00	N. 74 m	5.50
S. 60 E	5.50	S. 70 m	7.50
S. 45 E	4.50	S. 5 m	1.50 To Sec. line.
		over	

Meanders in T. 13 N. R. 2 E. Continued.

S. 50 W	11.00	Ln Sec 13.
N 80 W	4.50	
North	1.50	
N 25 E	2.50	
N. 45 E	2.50	
N. 58 E	.90	To Sec line.
N. 58 E	1.50	Ln Sec 12.
N. 75 E	5.50	
N 20 E	7.00	
N 10 W	3.50	
N 40 W	4.00	
N. 58 W	5.50	
N 70 W	6.50	
N 83 W	8.00	
N 22 W	2.00	
N 12 E	2.00	an Island.
N. 20 E	2.50	
N. 20 W	2.50	
N 15 E	2.50	
N 25 E	2.50	upper end of Island.
N 25 E	4.50	
N 44 E	4.00	
N 80 E	10.50	
N 39 E	7.00	
N. 10 E	5.50	
N. 10 W	6.50	
North	7.00	
N 8 E	6.50	
N 15 E	2.00	To Sec. line.
N. 15 E	4.50	Ln Sec. 1
N. 25 E	2.50	
N 50 E	5.50	
N 70 E	10.00	
N 55 E	3.00	
N 83 E	4.00	
N 68 E	2.14.	To Range line. B. Bentley D.S.

Compared Sept. 17 1849
J. E. H. + C. E. D.

The field notes herein described were recorded about the year 1824, but were not then attested by the Surveyor General.

We hereby certify that the Records of field notes contained in this Volume, on pages One to Three hundred and Fifty Two inclusive (except such portions thereof as has been re-recorded in other volumes) are correct: the same having been carefully compared with the original notes in this office, and corrected by us.

Surveyor General's Office,
Detroit Sept. 17. 1849

J. C. Hyde,
J. D. Smith.

Clerk.

I hereby certify that this volume contains a true Record of the field notes of the public surveys indicated therein, contained on pages One to Three hundred and Fifty two inclusive, (except so much thereof as has been recorded again in other volumes,) the same having been carefully compared with the original notes on file in this office, as stand above.

Surveyor General's Office,
Detroit Nov. 1. 1849.

Lecius Lyon,
Sur. Genl.